

MICHIGAN MEMORIAL CLASSIFIED SECTION

ONLY ONE LEFT!

A beautiful memorial bench overlooking the Huron River. Has space for cremations inside.

Call Sharon 734-934-1212

FREE SURVIVORS GUIDE!

Contains "87" things that must be done when there is a death.
Call 734-782-2473
No Obligations.

ONLY ONE 2-CRYPT MAUSOLEUM LEFT!

On private island!
Call Debbie 313-320-7318

Peaceful. Beautiful. Secluded. This describes the *Shrine of Remembrance Courtyard*.

Fountain and garden niches available.
Call Rick 734-658-7934 for more info.

LIGHTHOUSE NICHE ROW 2

Overlooking the Huron River. Only 4 Left!
Each for up to two people.
Call 313-561-6700 for details.

JUST PUT BACK ON THE MARKET!

A pair of perimeter crypts at Woodside Mausoleum.
Call Sharon for details.
734-934-1212



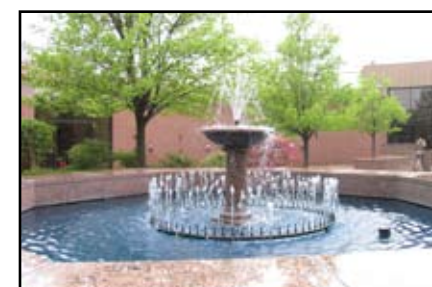
Michigan Memorial
PARK, Inc.



Michigan Memorial
PARK, Inc.

PRESORTED
STANDARD
US POSTAGE
PAID
PERMIT #10
48185

MICHIGAN MEMORIAL PARK
P.O. BOX 610
FLAT ROCK, MI 48134



Michigan Memorial

PARK, Inc.

Spring / Summer 2011

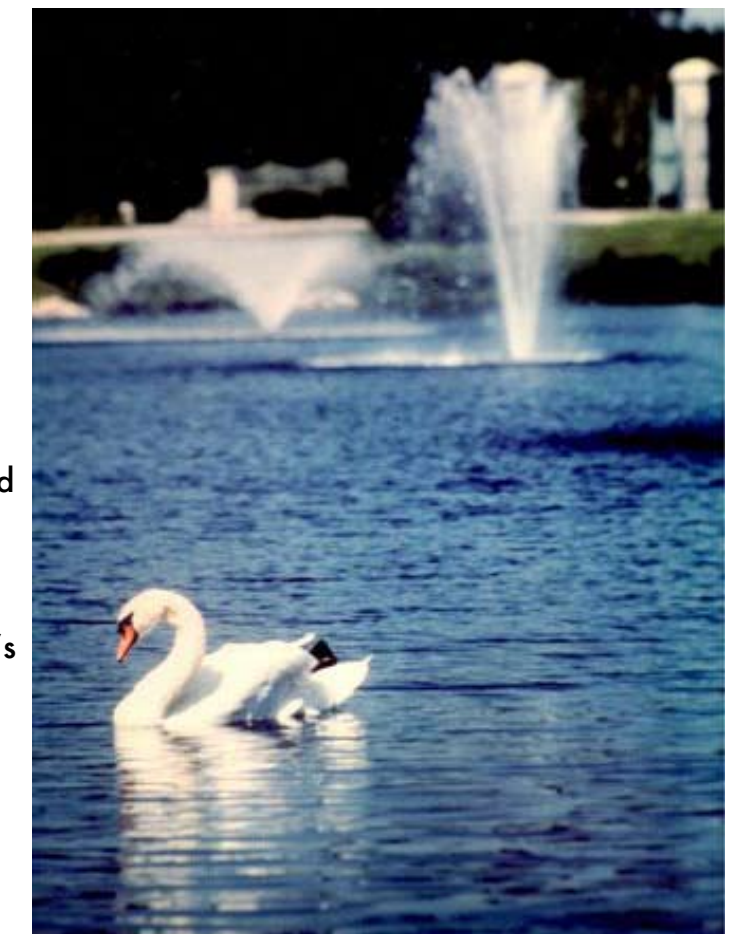
Michigan Memorial Park has a new look!

After 84 years of having, as our logo, the letters "MMP" intertwined, Michigan Memorial Park is making a change. In early 2010, Michigan Memorial, with the help of MKJ Marketing, conducted an extensive market study throughout the Downriver area to help identify what most people thought of when they thought of Michigan Memorial Park. Not surprisingly, "Swans" was the overwhelming response. So, beginning in 2011, MMP has adopted the swans for our new look.



(Old Logo)

The swans swimming in the front lake at MMP have been a part of the cemetery since our very beginning in 1926, and hundreds of thousands of people who have entered the gates have visited them. Over the next several months, we'll be phasing out the old logo and you will see the new logo worked in to all of MMP's new literature, visitor's maps, uniforms, etc. Thank you to those who participated in the survey and those who love the "MMP Swans".



CALENDAR OF EVENTS

Spring/Summer 2011

May 21

Veteran Recognition
Flags will be placed on all veterans' graves on this day by local Boy Scout and Cub Scout troops. Flags will stay on graves for one week after Memorial Day.

May 21

Fishing Derby
at Lake Sylvan for Vision Impaired
9:00 am - Organized by the Huron Valley Steel Headers.

June 2

Fishing Derby
at Lake Sylvan for Physically Impaired Children 9:00 am - Organized by Southgate Rotary.

June 12

Outdoor Catholic Mass
1:30 pm
Father John Hedges from St. Stephen Catholic Church will be officiating and will be held in front of the crucifix in the Mt. Carmel section of the cemetery.

July 6

American Red Cross Blood Drive
10:00 AM to 4:00 PM
Held at Michigan Memorial Funeral Home, please help save a life.

Flower Placement

Mother's Day, Memorial Day, Father's Day and Independence Day - Call Michigan Memorial Flower Shop for convenient flower placement at 734-783-2757 or 734-783-2646.

Cemetery Office Hours

Mon.- Sat. 8:30 AM to 5:00 PM
Sundays 12 noon to 5:00 PM
(During Jan, Feb. & March the office is closed on Sunday's)
734-782-2473 or 313-561-6700

Please visit our website at
www.michmempark.com

COMING SOON... Free Public Access Canoe/ Kayak Launch Site



Michigan Memorial is proud to announce that a new canoe/kayak launch site will be built on the shore of the beautiful Huron River located within the Park. Michigan Memorial was selected by the Downriver Linked Greenways Initiative to build the launch. The site will be located in the Heston Recreation area and directions will be provided at the Family Services Building located at the entrance of the Park. There will be no fee to use the launch, but hours of operation will be limited to when the Park is open. Expected date of completion is June 2011.

NEW....Michigan Memorial Walking Club

On April 1st, Michigan Memorial will be starting a new program, a Walking/Jogging Club. This program is for anyone who wants to get fit, stay fit, or would just like to get some fresh air once in a while in a safe environment. In the beginning, Michigan Memorial will be offering 3 maps to track mileage; 2 mile, 2.5 mile and a 3 mile route. Each route will bring walkers/joggers around to beautiful places within the Park. Incentives and challenges may also be offered during the year to those who sign up.

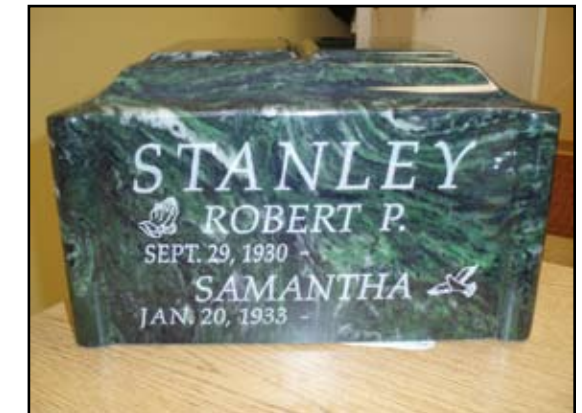


If you are interested in this walking/jogging club please stop in the front office for an application. This club is open to everyone who is 18 years or older and there is no fee.



Custom Engraving Now Available!

Recently, Michigan Memorial purchased a state-of-the-art engraving machine so we can help families memorialize their loved ones with more detail and less expense. As shown on this cremation urn (pictured), as well as many other items, the only limit to your creativity is how much space we have to work with. Since the engraving is now done "In-house", a proof of the design will be printed on-site and upon authorization, the engraving will be completed within days. Just another example of how Michigan Memorial helps families save money and time.



Committal Service Options

For the past several years, Michigan Memorial Park has been providing special services that most other cemeteries don't offer. We offer services on Sundays, Holidays (except Christmas) and at or after Sunset (after 5:00). If you are interested in one of these services, have your MMP Family Service Counselor schedule it with us. There is an additional charge for this type of service.

